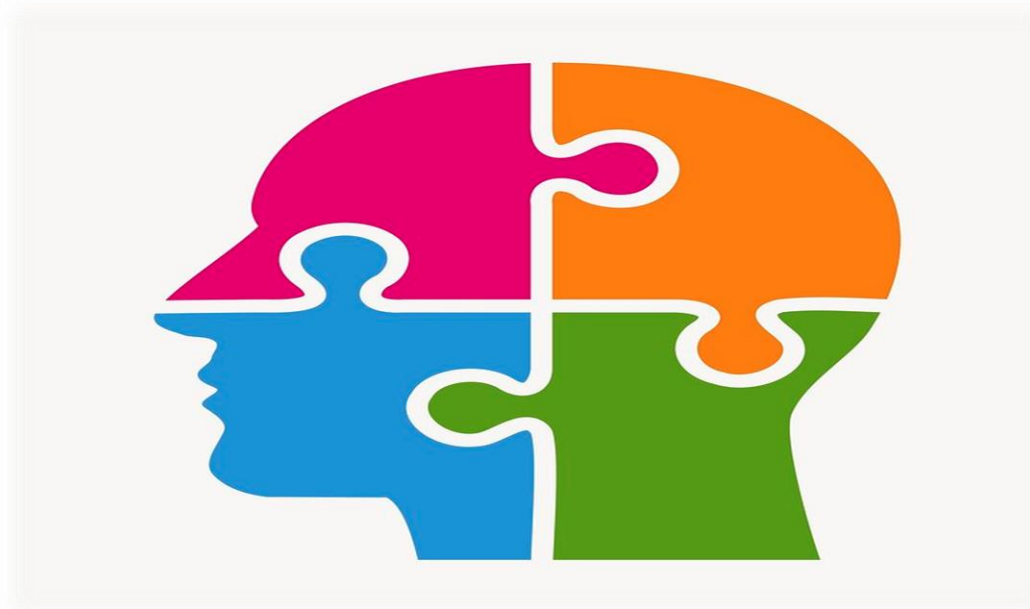


*Directory of Services:
Community and Voluntary Supports*



East Antrim and Antrim/Ballymena areas

Directory of Services

RISE NI (Regional Integrated Support for Education NI) works within mainstream school settings in the Northern Health and Social Care Trust. Our services have expanded beyond the Foundation years and Key Stage 1, into Key Stage 2 (KS2 - primary 5, 6 and 7). Our KS2 team is made up of Clinical Psychologists, Behaviour Therapists, Speech and Language Therapists and Occupational Therapists, as well as Therapy Assistants. We as a team have been facilitating a number of small group and whole class programmes since September 2022 in a number of schools, with a focus on children's social, emotional and mental health (SEMH). With this in mind our KS2 Team have developed a list of community and voluntary services that provide additional support to children, parents and carers, or families as a whole within your local area. This is a non – exhaustive list and is subject to change with new services being added or updated along the way.

RISE NI also offer a parent/carer website with information to support social skills, emotions and behaviour, talking and listening, gross motor skills and fine motor skills, visual perception, self-care and sensory needs. This information can be found at the link below or alternatively scan the QR code:

<https://view.pagetiger.com/RISENI/parents>



Supports and services:	Summary of support:	Location:	Contact:	Website:
24 hour domestic and sexual abuse helpline (Northern Ireland)	A highly trained Team deliver a range of support and services 24 hours a day, 365 days a year to children, young people, women and men who have been sexually abused, assaulted or raped, whether this happened in the past or more recently.	Northern Ireland wide service.	T: 08080 802 1414 E: help@dsahelpline.org	www.dsahelpline.org
ACE Youth (Young People Aged P6 Onwards)	Ace Youth is for young people aged P6 onwards. It aims to provide a safe and fun place for young people to hang out with their friends.	Abbots Cross Congregation Of The Presbyterian Church In Ireland, Newtownabbey.	T: 028 9085 2120 E: info@acpc.co.uk	https://www.acpc.co.uk/what-s-on
Action For Children Choices Family Support Service	Choices Family Support works with young people (10 to 17 year olds) where there are difficulties or concerns at home, in the community or in school.	4A Steeple Road, Antrim, Co Antrim, BT41 1AS	T: 028 9446 7345 or 075 2573 3598	https://www.actionforchildren.org.uk/
Action For Children Early Intervention Service (EISS) - (Northern Area)	The EISS is a service that provides short term support to families with children 0 -18 years who have additional needs or are facing challenges that are difficult to overcome such as: Issues at school, behavioural difficulties, coping with illness or bereavement, family difficulties, domestic violence and abuse, difficulties with developmental or health related issues.	EISS Northern Action for Children St Anthony's Primary School 43 Fairway Larne BT40 2BG.	T: 028 2827 6044 E: neiss@actionforchildren.org.uk	https://www.niacro.co.uk/sites/default/files/EISS%20Info%20for%20Parents.pdf

<p>Action For Children Family Support Hubs (Northern Trust wide).</p>	<p>A multi-agency network of statutory, community and voluntary organisations that provide early intervention services, or work with families who need support.</p> <p>The network accepts referrals and uses their knowledge of local service providers to signpost families with specific needs to an appropriate service. Action for Children coordinate the Hubs in the Northern Trust Area.</p>	<p>4A Steeple Road, Antrim, Co Antrim, BT41 1AS</p>	<p>T: 028 9446 7345 or 075 2573 3598 E: pamela.sweeney@actionforchildren.org.uk M:075 2573 3601</p>	<p>https://www.actionforchildren.org.uk/how-we-can-help/our-local-services/find-our-services-near-you/choices-family-support-service/</p>
<p>Action for Children – Parent Talks (Northern Trust wide)</p>	<p>Self – referral for parenting advice from a coach. It is free and confidential. You can talk to a coach on webchat or whatsapp.</p>	<p>4A Steeple Road, Antrim, Co Antrim, BT41 1AS</p>	<p>T: 0808 8010 722</p>	<p>https://parents.actionforchildren.org.uk/</p>
<p>Al-Anon (Northern Ireland)</p>	<p>To help and support families and friends of problem drinkers.</p>	<p>Al-Anon Information Centre, 224 Lisburn Road, Belfast BT9 6GE</p>	<p>T: 028 9068 2368</p>	<p>www.al-anonuk.org.uk</p>
<p>ASCERT and the Health Development Department</p>	<p>ASCERT have created online self – help resources with workbooks that can be downloaded and visual clips. These include information on building our children’s developing brain, self – compassion and CBT.</p>	<p>23 Bridge Street Lisburn. BT28 1XZ</p>	<p>T: 0800 254 5123</p>	<p>https://www.ascert.biz/self-help-resources/</p>

Autism NI (Northern Ireland)	Autism NI exists to support autistic individuals and their families and campaigns to raise awareness of autism within the wider society.	Donard, Knockbracken Healthcare Park, Saintfield Road, Belfast, BT8 8BH	T: 028 9040 1729 E: info@autismni.org	https://www.autismni.org/about-2
Barnardos Child Bereavement Service (Northern Ireland)	The Child Bereavement Service supports children who have suffered loss and their parents/carers through counselling, group work and individual therapy. Consultancy and training to professionals working with bereaved children.	23 Windsor Avenue Belfast. BT9 6EE.	T: 02890668333. M: 07867372711. E: cbsreferrals@barnardos.org.uk	https://www.barnardos.org.uk/what-we-do/services/child-bereavement-service-general
Barnardo's - Newtownabbey Family Connections	The Newtownabbey Family Connections Project has built a network of Community Schools in disadvantaged communities in Newtownabbey. It works in partnership with local schools, services and families. Project staff co-ordinate service delivery and build partnerships to provide extended-learning opportunities, integrated health and mental health services, parent support and community capacity building.	Dunanney, Rathmullan Drive, Newtownabbey, Co Antrim, BT37 9DQ	T: 02890419069	https://www.barnardos.org.uk/get-support/services/newtownabbey-family-connections
Barnardos Young Carers (Northern Trust wide)	Barnardos Young Carers service aims to help as many young carers as we can. They help them look after their loved ones and give them time to enjoy their childhoods.	36a Westland Road Magherafelt County Londonderry BT45 5AY	T: 028 79631344 E: MagherafeltAdminMailbox@barnardos.org.uk	https://www.barnardos.org.uk/what-we-do/helping-families/young-carers
Ballymena South Community Cluster	Ballymena South Cluster is about supporting local communities to deliver community based programs and to signpost to a range of service	Ballee Community Centre, 3 Ballee Way, Ballymena, Co Antrim, BT42 3EX.	T: 028 2563 1350.	https://www.ballymenasouth.com/

	provision for all ages including children and young people.			
BEAT Eating Disorder Service (Northern Ireland)	BEAT’s vision is an end to the pain and suffering caused by eating disorders. They are inspired by the people they serve, by the difference they can make, and by their commitment to each other.	Northern Ireland wide service.	T: 0808 801 0434 E: NIhelp@beateatingdisorders.org.uk	https://www.beateatingdisorders.org.uk/about-beat/
Cara-Friend (Northern Ireland)	Provides information and support to the lesbian, gay, bisexual and transsexual community.	Belfast LGBTQI+ Centre, 23-31 Waring St, Belfast. BT1 2DX.	T: 028 9089 0202	www.cara-friend.org.uk
Care for the Family (Northern Ireland)	Aims to strengthen family life and help those who face family difficulties, through a variety of family building events, courses and training. They also provide resources and other initiatives for families in particular situations such as those parenting alone.	Northern Ireland wide service.	T: 028 9262 8050 E: caroline.bradley@cff.org.uk	https://www.careforthefamily.org.uk/
Carrickfergus Youth Engagement Service: Wellbeing Hub	The Youth Engagement Service provides a youth friendly, holistic health and wellbeing service where young people, aged 11-25, have opportunities to socialise and to get advice and support on a range of issues.	30-34 Irish Quarter West Carrickfergus. BT38 8AT.	T: 02893355890 E: info@carrickymca.org	https://carrickymca.org/what-we-do/health-hub/wellbeing-web/

Cause (Northern Ireland)	A local charity providing peer-led emotional and practical support to carers and families of people with mental illness.	Northern Ireland wide service.	T: 028 9065 0650 Helpline: 0800 103 2833	www.cause.org.uk
Childhood Trauma, War, Migration and Asylum – UK Trauma Council	Evidence based resources to help children and young people affected by war, migration and asylum as well as the professionals supporting them in both educational and community settings. The resources have been co-produced with young people with lived experience of seeking asylum and those who support them.	UK wide service Anna Freud Centre 4-8 Rodney Street London N19 JH	T: 020 7794 2313 E: info@annafreud.org	https://uktraumacouncil.org/resources/childhood-trauma-migration-asylum
Childline (Northern Ireland)	Childline is here to help anyone under 19 in the UK with any issue they're going through. Childline is free, confidential and available any time, day or night.	Northern Ireland wide service.	T: 0800 1111	www.childline.org.uk https://www.childline.org.uk/get-support/1-2-1-counsellor-chat/
Children's and Young Peoples Strategic Partnership (CYPSP)	Multiagency strategic partnership consisting of key agencies across statutory, voluntary and community sectors who have responsibility for improving outcomes for all children and young people in NI.	Spruce House, Braid Valley Hospital Site, Cushendall Road, Ballymena, BT43 6HL	T: 028 2563 5575 M: 07901842365	www.cypsp.hscni.net/youth-wellness-web/
Citizens Advice (Northern Ireland)	Free confidential, impartial advice; debt counselling services	Farranshane House, 1 Ballygore Road, Antrim	Antrim and Newtownabbey 02895906505 Mid and East Antrim: 02896001333	https://www.citizensadvice.org.uk/about-us/northern-ireland/

		<p>Dunanney Centre, Rathmullan Drive, Newtownabbey</p> <p>4 Wellington Court, Ballymena</p> <p>Unit 1, 11 Antrim Street, Carrickfergus</p> <p>2 Station Road, The Market Yard, Larne</p>		
CLIC (Northern Ireland)	Support for children suffering from cancer and leukaemia, and signposting for parents and anyone else affected.	Northern Ireland wide service.	T: 028 9072 5780 03003300803	www.clicsargent.org.uk
Compassionate Friends (Northern Trust wide)	Provides support for bereaved parents to listen and care when you need someone to talk to and offer emotional support.	Northern Ireland wide service.	T: 0345 123 2304	www.tcf.org.uk
Contact for Families with Disabled Children (Northern Ireland)	Signposting and help with disabilities. In the NHSCT area, family workers offer parents one-to one help and support through times of need.	63-75 Duncairn Gardens, Belfast BT15 2GB.	T:028 9262 7552 Freephone: 0808 808 3555 E: nireland.office@contact.org.uk	https://contact.org.uk/
CRUN (Causeway Rural and Urban Network) and Northern Area	Assist community groups, youth projects and charities across the Causeway Coast & Glens Borough and the Northern Trust area.	Covering Ballymena, Ballymoney, Coleraine, Moyle and Larne	T: 028 7034 4934 E: info@crun.org	www.crun.org

Community Newwork		1 Brook Street Coleraine BT52 3RQ		
Extern: Looked After Children (LAC) Mentoring (Northern Trust wide)	LAC Mentoring Support is a community-based programme supporting young people aged between 10-20 who are 'looked after' to develop skills, improve relationships and maximise potential.	Extern, HydePark. Newtownabbey.	T: 028 9084 0555 E: lacmentoring@extern.org	https://www.extern.org/looked-after-children-lac-mentoring
Family Focus (covering Antrim Larne and Newtownabbey)	Family Focus are a Registered Interdenominational Christian Charity that seeks to provide a family support and resource network through which the holistic wellbeing of individual family members is nurtured. By doing so, they work towards creating confident family units which in turn contributes to building a more harmonious future in community life.	Foundry House, 24-32 Doagh Road, Ballyclare, Co Antrim, BT39 9BE.	T: 07428 692 808. E: familyfocusballyclare@gmail.com	https://www.ballyclarefamilyfocus.com/
Family Fund (Northern Ireland)	Family Fund provides a wide range of grants to families living in Northern Ireland raising a disabled or seriously ill child, or young adult, on a low income.	4 Alpha Court, Monks Cross Drive, York, YO32 9WN,	T: 01904550055	https://www.familyfund.org.uk/grants/schemes/northern-ireland-core-programme/
Family Meditation Service (Northern Ireland).	The aim of the Family Meditation Service is to provide a positive approach to conflict management within families. This can be in the context of parental separation as well as other inter family disputes.	Family Mediation NI Rights House, 127-131 Ormeau Road Belfast. BT7 1SH.	T: 028 9024 3265 E: enquiry@familymediationni.org.uk	https://www.familymediationni.org.uk/contact/

Family Support Hub (Northern Ireland).	Family support hubs provide early intervention family support services to vulnerable families and children aged 0-18.	New Horizons Building, 4a Steeple Road, Antrim, Co Antrim, BT41 1AF	T: 02894467345 or 07921492138	https://www.familysupportni.gov.uk/Service/3188/family-support/family-support-hub--northern-outcomes-area
Family Ties Project (Northern Ireland).	Provides practical advice, guidance, advocacy support, counselling and befriending to parents, guardians and family members of lesbian, gay, bisexual, transgender and queer people.	Belfast Office 23-31 Waring Street Belfast BT1 2DX	T: 028 9031 9030	https://www.rainbow-project.org/
FLARE (Facilitating Life and Resilience Education) (Northern Trust wide).	FLARE support young people, aged 11 and up. They operate under a model of youth work practice and all staff are qualified youth workers with specific training and experience within the Mental Health and wellbeing landscape.	Ballykeel Youth Centre 20 Crebilly Road Ballymena, BT42 4DN	T: 028 2563 0064 M1: 077 3997 9443 M2: 077 2071 7275 E: flare@eani.org.uk	https://www.mindingyourhead.info/sites/default/files/publications/flare_rollover_leaflet2019small.pdf
Headway (Northern Ireland).	The brain injury association 24/7 service. Dedicated to supporting people with a brain injury, as well as their families and carers.	Business Centre North, 120 Cushendall Rd, Ballymena BT43 6HB.	T: 028 2565 1521 E: enquiries@headway.org.uk Helpline: 0808 800 2244 or helpline@headway.org.uk	www.headway.org.uk
Help Kids Talk (Northern Ireland)	The Help Kids Talk programme is a community-wide initiative and aims to ensure everyone who has any responsibility for a child prioritises speech, language, and communication development. This project will result in a positive impact across all areas of a child's life including educational attainment, mental health	Unit 2, LaganView Enterprise Centre, 69 Drumbeg Drive, Lisburn, BT28 1NY.	T: 028 9267 0755 E: helpkidstalk@resurgamtrust.co.uk	https://helpkidstalk.co.uk/

	and wellbeing, social relationships, and employability later in life.			
Home-start (Antrim)	Home-Start is a local community network of trained volunteers and expert support helping families with young children through their challenging times.	12b Market Square, Antrim, Co Antrim, BT41 4AW.	T: 028 9442 8090, 079 5599 9516.	https://www.home-start.org.uk/Pages/Category/home-start-northern-ireland
Home-start (East Antrim)	Home-Start is a local community network of trained volunteers and expert support helping families with young children through their challenging times.	Home-Start Oakfield Drive Carrickfergus BT38 7SP	T: 07799373478 E: office@homestarteantrim.org.uk	https://www.home-start.org.uk/Pages/Category/home-start-northern-ireland
Larne Community Centre	Support for families who suffer from social exclusion i.e. intimidation, homelessness, low income - benefit dependency, ill mental health. Also support to help families train or seek employment by providing childcare support. Information and training for parents and volunteers.	1-5 Doric Way, Antiville, Larne, Co Antrim, BT40 2BH.	T: 028 2827 3362 E: info@larncecc.org.uk	
LGBTQIA+ (Northern Ireland)	Provides contacts and supports for the LGBTQIA+ community.		T: 0808 8000 390	www.lgbtni.org
Lifeline (Northern Ireland)	Lifeline is the Northern Ireland crisis response helpline service for people who are experiencing distress or despair. Regardless of your age or where you live in Northern Ireland, if you are or someone you know is in distress or despair,	Northern Ireland wide service.	T: Freephone 0808 808 8000. Text-phone service on 18001 0808 808 8000.	https://www.lifelinehelpline.info/

	Lifeline is here to help. Lifeline offers the right support, at the right time, anytime.			
Mae Murray Foundation (Northern Ireland)	The Mae Murray Foundation was set up to allow people of all ages and abilities to take part in activities, experience the world, and enjoy friendship together, in an inclusive environment.	Mae Murray Foundation A6 Willowbank Business Park Millbrook Larne BT40 2SF.	T: 0300 600 1166 E: info@maemurrayfoundation.org	https://www.maemurrayfoundation.org/
Migrant Centre NI (Northern Ireland)	This service was established to protect the rights of migrant workers in NI, tackle racism, eliminate barriers against migrant workers, advance education and raise public awareness about their rights.	Unit 3, CIDO Business Complex Charles Street Lurgan BT66 6HG	T: 0330 088 0464 E: admin@migrantcentreni.org	http://migrantcentreni.org/contact/
Mindwise: Family Wellness Project (Northern Trust wide)	Mindwise: Family Wellness Project aims to enhance the emotional health and wellbeing of children aged 5 - 12 who are at risk of developing significant mental health difficulties if early intervention measures are not identified and addressed, with a view to reducing their need for more intensive or long term support from statutory/other services.	1 Henry Gill Court Ellis Street, Carrickfergus BT38 8AX	T: 028 9332 9575 E: carmel.rooney@mindwisenv.org	https://www.mindwisenv.org/
Monkstown Village Initiatives: IMPACT - Girls' Group	This is a girls' only group, meeting weekly to chat and discuss 'girls stuff'. No hassles, no pressure, just girls.	Upper Rooms 18 Monkstown Village Centre Newtownabbey BT37 0HS.	T: 028 9086 0090 E: info@monkstownvillagecentre.com	https://monkstownvillageinitiatives.com/youth-works/

<p>Monkstown Village Initiatives: Stress B.E.A.T.</p>	<p>Along with staff from the Youth Works project, the service have devised a stress management programme for use in schools, Stress B.E.A.T.</p> <p>There are two versions available; one suitable for use in a post-primary setting and one designed specifically for P7 pupils. Using CBT techniques Stress B.E.A.T. aims to normalise stress.</p>	<p>Upper Rooms 18 Monkstown Village Centre Newtownabbey BT37 0HS.</p>	<p>T: 02890860090 E: info@monkstownvillagecentre.com</p>	<p>https://monkstownvillageinitiatives.com/youth-works/</p>
<p>My Family Matters Foundation Ltd (Northern Ireland)</p>	<p>My Family Matters Foundation Ltd is an early intervention and prevention service, providing a family systems approach to enhancing parents understanding, of their options, for resolving issues, related to the decisions and care of their children after separation.</p>	<p>The Wee House, 13 Queen Street, Derry, Co Derry, BT48 7EQ.</p>	<p>T: 02871 163138</p>	<p>https://www.myfamilymattersfoundation.co.uk/</p>
<p>Neurodiversity UK (Northern Ireland)</p>	<p>Neurodiversity UK is a not-for-profit charity that provides support for people with neuro-developmental conditions. They offer a range of services to help improve the lives of those with these conditions, through health support for families, educational support and recreational activities.</p>	<p>Head office: 57 -59 Castle Street, Comber BT23 5DY.</p>	<p>T: 028 9189 7677 E: comber.asg@outlook.com</p>	<p>https://www.neurodiversityuk.com/</p>
<p>Nexus NI</p>	<p>Advice and confidential support and counselling for those who have been sexually abused.</p>	<p>Northern and Western area</p>	<p>T: 028 9032 6803 E: info@nexusni.org</p>	<p>https://nexusni.org</p>

NICMA The Childminding Association	Support for registered childminders and support for parents finding registered childcare	Suite 3 Elizabeth House 116-118 Holywood Road Belfast BT41 1NU	T: 07517 472 271 E: grainne@scullion@nicma.org	www.nicma.org
NSPCC (Northern Ireland)	Child protection 24/7 helpline – emotional, physical or sexual abuse or neglect.	Northern Ireland wide service.	T: 0808 800 5000	https://www.nspcc.org.uk/about-us/what-we-do/northern-ireland/
Oasis Community Support Hub (Antrim)	Oasis Antrim Community Support Hub have a diverse range of youth, family, and community support programmes, focused on transforming lives and communities.	10D High Street Antrim BT41 4AN.	T: 028 9446 9020 E: Rachel.Horner@oasis-ni.org	https://www.oasisantrim.org/family
Parenting Focus (Northern Ireland)	<p>Parenting Focus provides a Freephone Support Line and other regional services, initially delivered by volunteers and now by trained staff, has helped thousands of parents, grandparents and others in a parenting role for over 4 decades.</p> <p>Parenting Focus is committed to supporting all parents and ensuring that their voices are heard whenever decisions are made that will affect them. They continue to or endeavour to deliver a range of high quality support and services to meet parents' needs.</p>	Parenting Focus, First Floor, Unit 3, Hawthorn Office Park, 39a Stockman’s Way, Belfast, BT9 7ET, Northern Ireland.	T: 0808 8010 722. T: 028 9031 0891.	https://www.parentingfocus.org/

Parenting NI (Northern Ireland)	Parenting NI offers services to support parents and carers including a Freephone helpline, face-to-face support, counselling, parenting programmes and the opportunity to have a say on the issues affecting parents and carers.	Northern Ireland wide service.	T: 0808 801 0722	www.parentingni.org
ParentlineNI (Northern Ireland)	ParentlineNI is FREE confidential helpline for parents and carers throughout NI.	Children in NI Unit 9 40 Montgomery Road 028 9040 1290 Belfast, BT6 9HL.	T: 0808 8020 400 E: info@ci-ni.org.uk	https://www.ci-ni.org.uk/parentline-resources/
Phoenix Youth – Victim Support	This service delivers Creative Arts Therapy to children and young people, aged 8-21 who live in the Northern Health and Social Care Trust area. They aim to provide therapeutic support completely tailored to individual needs, keeping the client at the centre of all that they do.	Central Office: 1st floor Albany House, 73-75 Gt Victoria St, Belfast BT2 7AF	T: 02890 243133	https://www.victimsupportni.com/young-people-crime/phoenix/
Relate NI (Northern Ireland)	Services include relationship counselling for individuals, children and young people, couples, families and counselling for children and young people; relationship MOTs and more.	Glengall Exchange 3 Glengall Street Belfast BT12 5AB	T: 028 9032 3454	www.relateni.org
SAIL (Northern Ireland)	A support group for families of gender variant or transgender variant or transgender individuals of any age.	Northern Ireland wide service.	T: 028 9532 0023	www.sailni.com

Samaritans (Northern Ireland)	Samaritans is a registered charity aimed at providing emotional support to anyone in emotional distress, struggling to cope or at risk of suicide. Free to call from mobiles and landlines.	Northern Ireland wide service.	T: 116 123	www.samaritans.org
Solihull	Free online courses in mental health and wellbeing for young people, parents, carers wanting help with their relationships. Also provides face to face trainings for anyone working within the children and families in relation to mental health and health and wellbeing.	Northern Ireland wide service.	T: 0784871965 E: mhtrain365@yahoo.com	www.solihullapproachparenting.com www.inourplace.co.uk Access code: NIBABIES www.solihullapproachparenting.com
START 360 The Voices Service (Northern Trust wide)	The VOICES service works directly with children/young people (8 to 17 years old) where parental substance misuse is an issue.	First Floor, 7-9 Wellington St. Ballymena BT43 6AB	T: 028 9043 5810 E: Kathleen.Gregg@Start360.org	https://start360.org/how-can-we-help-you/voicesnorth
Strive NI (Northern Ireland wide service)	Strive NI offer small group sessions in school, as well as individual sessions focusing on developing emotional regulation skills or social skill development.	Northern Ireland wide service.	T: 02890849619 E: info@striveni.co.uk	https://striveni.co.uk/
St Vincent De Paul (Northern Ireland)	St Vincent De Paul work through person to person (all ages) contact encompasses support that alleviates suffering.	196-200 Antrim Road, Belfast, Co Antrim, BT15 2AJ.	T: 028 9035 1561.	https://www.svp.ie/what-we-do/local-offices/north-region.aspx

Text-A-Nurse: P7 and up (Northern Ireland)	An anonymous confidential messaging service, available Monday-Friday 9am-5pm. The message is delivered to a safe and secure web application for the nursing staff to view. Guaranteed response within 24 hours.	Northern Ireland wide service.	T: 07480635982	www.chathealth.nhs.uk
Time To Shine Drama (Glengormely)	Time To Shine Drama provides classes in Glengormley and North Belfast. Acting, Performing and Confidence building. Time to Shine Drama Classes focus on the personal development of each individual pupil through the use of drama games and the craft of acting. Our aim is the increase in self-worth, esteem and confidence of our pupils.	St Brigids Parish Church. Glengormley.	T: 07814096519 E: louisemathews@gmail.com	https://en-gb.facebook.com/pg/timetoshineclasses
TransgenderNI	TransgenderNI advocates for the human rights of trans people in Northern Ireland, as well as providing support and advocacy to individuals online and through the Belfast Trans Resource Centre.	Belfast Trans Resource Centre 98 University Street BELFAST, Northern Ireland BT7 1HE	T: 0300 302 3202 E: info@transgenderni.org.uk	www.transgenderni.org.uk https://belfasttrans.org.uk/
Winstons Wish (Northern Ireland)	Winston's Wish charity supports bereaved children, young people, their families and the professionals who support them.	Head office Winston's Wish Conway House 31-33 Worcester Street Gloucester GL1 3AJ	Freephone Helpline: 08088 020 021 Email: ask@winstonswish.org	https://winstonswish.org/

Young Lives vs Cancer (formerly CLIC) (Northern Ireland)	Support for children suffering from cancer and leukaemia, and signposting for parents or anyone else affected.	25 Elmwood Mews Belfast BT9 6BN.	T: 028 9072 5780 T: 0300 330 0803 E: GetSupport@younglivesvs-cancer.org.uk	www.younglivesvs-cancer.org.uk
---	--	-------------------------------------	---	--------------------------------

Emergency Contact if you are concerned about a child:

Emergency Social Services (Northern Ireland)	Outside office hours, you can contact the Regional Emergency Social Work Service if you have a concern about a child's wellbeing.	T: 028 9504 9999 (evenings and weekends).	http://www.northerntrust.hscni.net/services/emergency-social-work-service/
Gateway (Social Services)	The NHSCCT children's social work service is a first point of contact for anyone concerned about the welfare of a child or young person.	T: 0300 123 4333 (Mon-Fri 9am-5pm)	http://www.northerntrust.hscni.net/services/gateway-childrens-social-work-service/